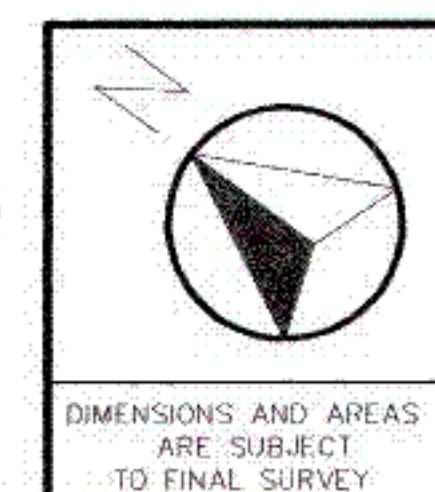




NOTE :-  
REALIGNMENT OF ROAD FROM POINT (A) TO POINT (B) WAS APPROVED  
IN THE PUNJAB REGIONAL & TOWN PLANNING & DEVELOPMENT  
BOARD MEETING HELD ON 4/02/2010



### LEGEND

- |   |                                  |
|---|----------------------------------|
|    | MULLANPUR BOUNDARY               |
|    | PLPA Area                        |
|    | RESIDENTIAL                      |
|    | MIXED USE                        |
|    | INDUSTRY - TECHNOLOGY AND R & D* |
|    | HEALTH & MEDICAL CARE*           |
|    | CIVIC & COMMUNITY INSTITUTION*   |
|    | EDUCATIONAL INSTITUTION          |
|    | RURAL & AGRICULTURE              |
|    | FOREST AND OPEN SPACE            |
|    | SHIVALIK HILLS                   |
|    | PARK                             |
|    | 100 metres BUFFER ZONE           |
|    | TRANSPORT FACILITIES             |
|    | WATERBODY                        |
|    | RIVER RESERVE                    |
|    | SPORTS & RECREATION              |
|    | EXISTING VILLAGE                 |
|   | EXISTING BUILTUP                 |
|  | ROAD                             |
|  | PROPOSED METRO LINE              |
|  | UTILITIES                        |

DEPARTMENT OF  
TOWN & COUNTRY PLANNING, PUNJAB

Drawing No. 2061/10 D.T.P. (S.A.S.)

Dated : 28.12.2010

D.T.P (SAS NAGAR)	S.T.P (SAS NAGAR)	C.T.P (PUNJAB)
----------------------	----------------------	-------------------

**CLIENT :**

GREATER MOHALI AREA  
DEVELOPMENT AUTHORITY  
(GMADA)

**SHEET TITLE :**

## SECTOR PLAN MULLANPUR

SCALE : 1 : 20 000 (A1)	DATE : 28 DECEMBER 2010
-------------------------	-------------------------

**PLAN : PROPOSED LANDUSE PLAN**

A scale bar with markings at 0, 0.5, 1.0, and 1.5 km. The bar is divided into segments: black from 0 to 0.25 km, white from 0.25 to 0.5 km, black from 0.5 to 0.75 km, white from 0.75 to 1.0 km, black from 1.0 to 1.25 km, and white from 1.25 to 1.5 km.